

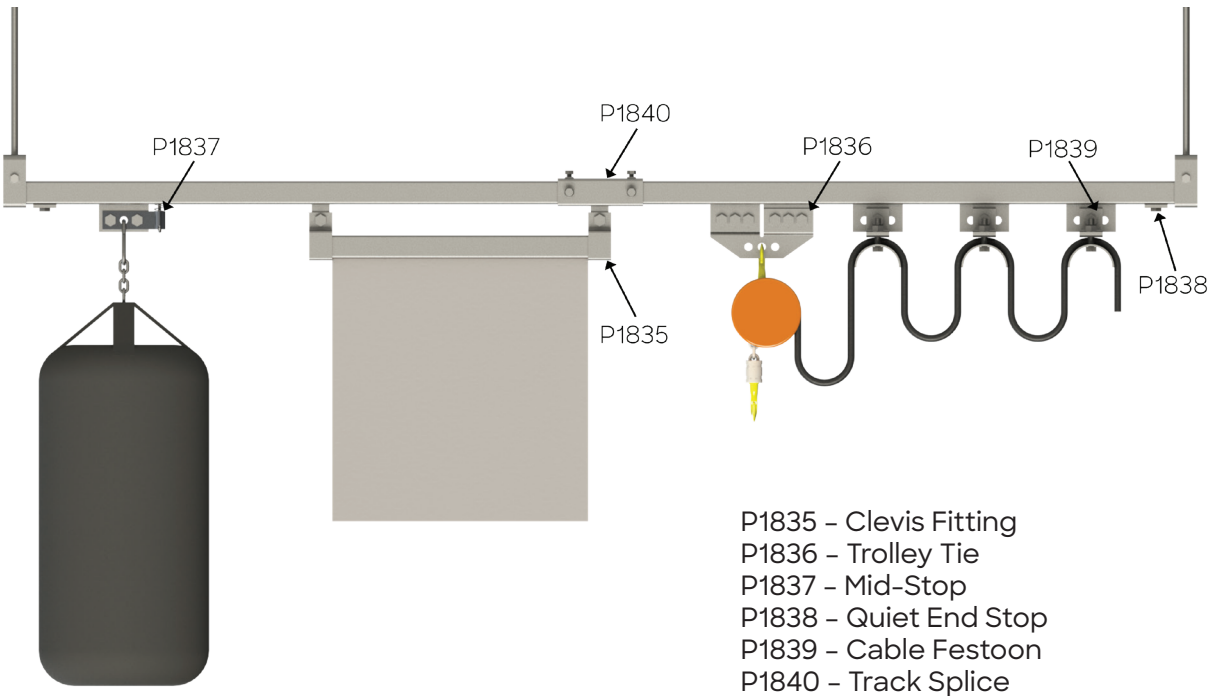
# Atkore Unistrut Trolley System Products and Accessories



**Atkore**<sup>™</sup>  
Unistrut

## All-In-One Trolley System

Unistrut® is proud to offer an expansion to our current trolley offering! We are introducing 6 new products that will help our system cover a much larger range of applications including heavy duty, festoons, and much more! Combined with our current wide selection of products, Unistrut can be your single source for both trolley and support systems.



### Features and benefits:

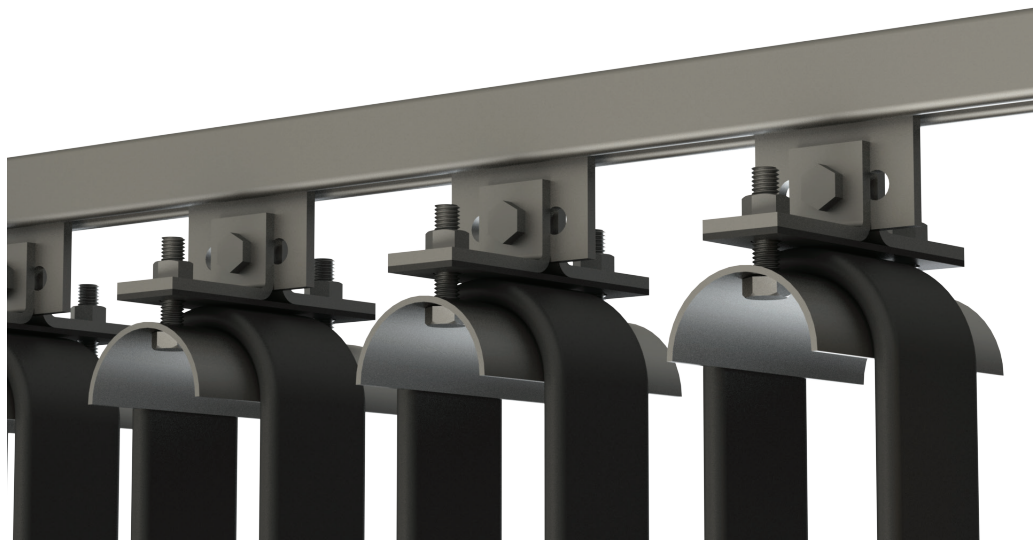
- **Easy and customizable trolley systems**
  - Customize the optimal design for any application
  - Application templates are available to make it quick and easy for the designer
  - Connect the trolley system to any Unistrut system for additional customizability
- **High capacity and smooth operation**
  - The system can support heavy, medium, and light loads
  - Smooth and reliable movements with self-cleaning bearings
  - Quiet movement and stopping options available
- **Curved Track Available**
  - Visit [atkore.com/unistrut](http://atkore.com/unistrut) for more information

Heavy Duty		Medium Duty		Light Duty	
Part No.	Max Load (Lbs)	Part No.	Max Load (Lbs)	Part No.	Max Load (Lbs)
P2950 + P1836	1200	P2950	600	P2750	100
		P2949	400	P2749	50

Please contact us at [unistrut.us/contact](http://unistrut.us/contact) or give us a call at 800-882-5543 for additional information.

## Festoons

Festoon systems are a great way to manage cables for electrical items moving along a track like hoists, motors, etc. The P1839 festoon attachment easily combines with our P2950 or P2949 trolleys to create a smooth moving, high-strength festoon solution.



Allowable load: 600 lbs. each\*

### Applications:

- Auxiliary cable system for electrical crane
- Electrical hoist (Pictured)
- Overhead power tools

Part Number	Description
P1000	1-5/8" x 1-5/8", 12 Gage Channel
P1839	Trolley Festoon
P2950	4-Wheel Trolley

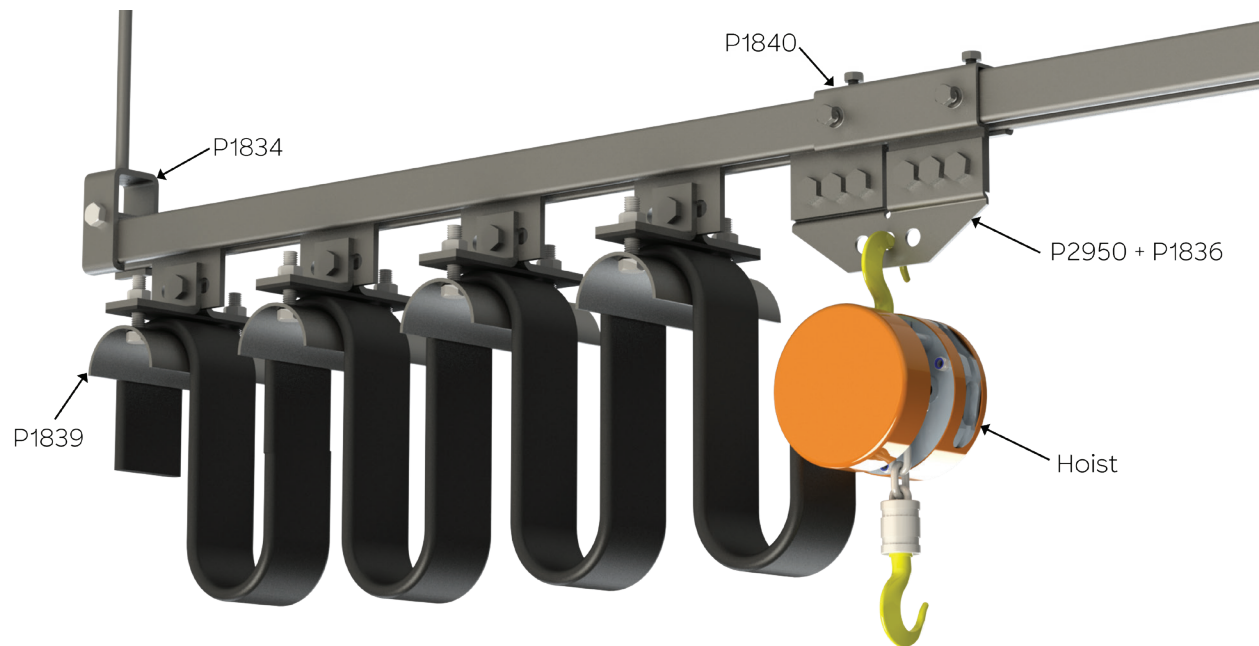
Please contact us at [unistrut.us/contact](http://unistrut.us/contact) or give us a call at 800-882-5543 for additional information.

\* Based on allowable load for trolleys, actual allowable load may be determined by the allowable load of other strut/fittings.

# Atkore Unistrut Trolley System™

## Hoists

With a 1200 lb. maximum load, the Unistrut trolley system is a great solution for any hoist applications ranging from light to heavy duty. For powered hoists, this can be paired with our festoon products to easily manage large cables. Heavier duty loads can utilize the P1836 trolley tie to double the allowable capacity of the system compared to a single P2950.



Allowable load: 1200 lbs. each\*

### Applications:

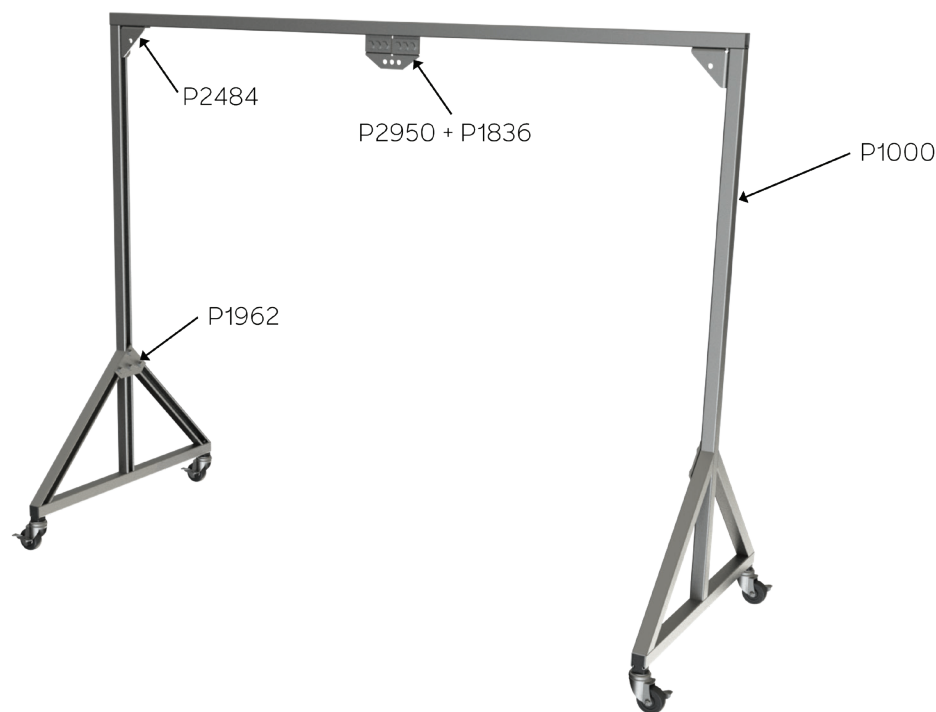
- Warehouse storage movement
- Garage hoists

Part Number	Description
P1000	1-5/8" x 1-5/8", 12 Gage Channel
P1834	Channel Trolley Support
P1836	P2950 Trolley Tie
P1839	Trolley Festoon
P1840	Track Splice
P2950	4-Wheel Trolley

\* Based on allowable load for trolleys, actual allowable load may be determined by the allowable load of other strut/fittings.

## Portable Lifting and Moving Structures

Combining a Unistrut frame with trolleys allows you to create portable structures that can be used to easily lift and move heavy items from one place to another.



Allowable load: 1200 lbs. each\*

**Applications:**

- Gantry cranes (Pictured)
- Temporary/collapsible lifting structures

Part Number	Description
P1000	1-5/8" x 1-5/8", 12 Gage Channel
P1836	P2950 Trolley Tie
P1962	4-Hole, Flat Plate Fitting
P2484	7 Hole, 90° Gusseted Fitting
P2950	4-Wheel Trolley

\* Based on allowable load for trolleys, actual allowable load may be determined by the allowable load of other strut/fittings.

## Gantry Systems

Unistrut’s trolley system can be used to create multi-directional gantry systems to reach a greater area in a room or across the floor. Pairing with the P2950 four-wheeled trolleys with P1001 strut allows you to build high-strength, versatile gantry systems. These structures allow for the multi-directional transportation of heavy loads, which minimizes the risk of injury.



Allowable load: 600 lbs. each\*

### Applications:

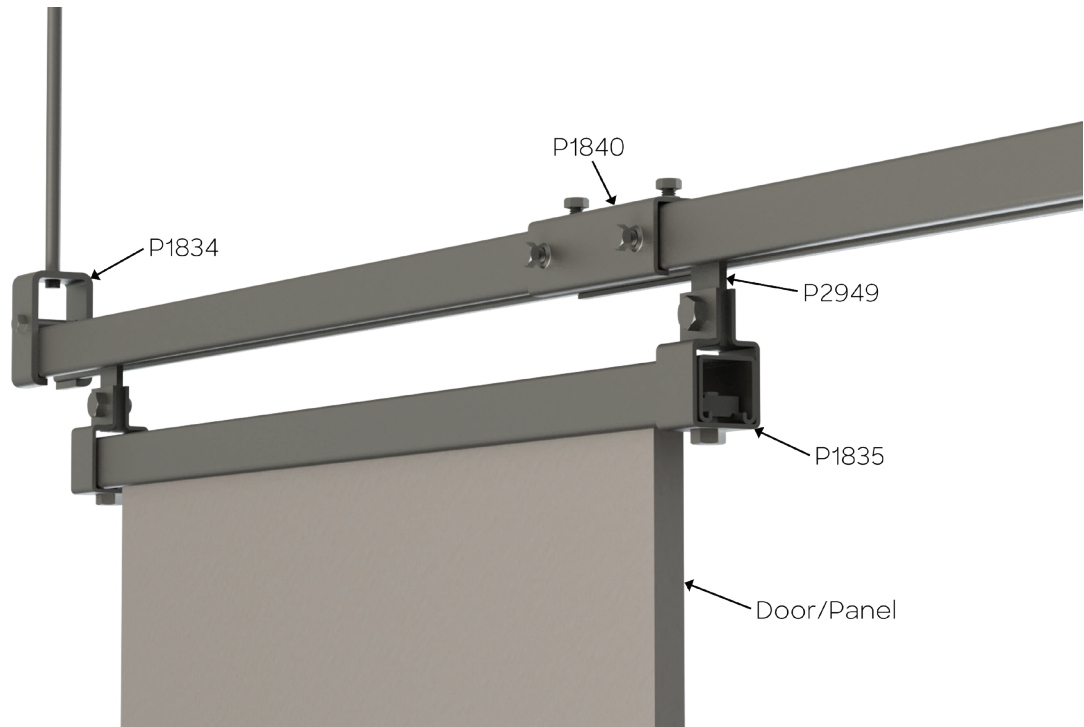
- Patient walking assistance
- Work area cranes

Part Number	Description
P1001	1-5/8" x 3-1/4", 12 Gage Back-to-Back Channel
P1026	2 Hole, 90° Fitting
P1839	Trolley Festoon
P2950	4-Wheel Trolley

\* Based on allowable load for trolleys, actual allowable load may be determined by the allowable load of other strut/fittings.

## Sliding Doors and Panels

Doors and Panels can easily be hung from suspended strut using our P1835 clevis fittings. Our smooth-rolling wheels allow the door to easily glide along the track. Pair with our P1838 rubberized stops for a quiet stop at the end of the track.



Allowable load: 500 lbs. each\*

### Applications:

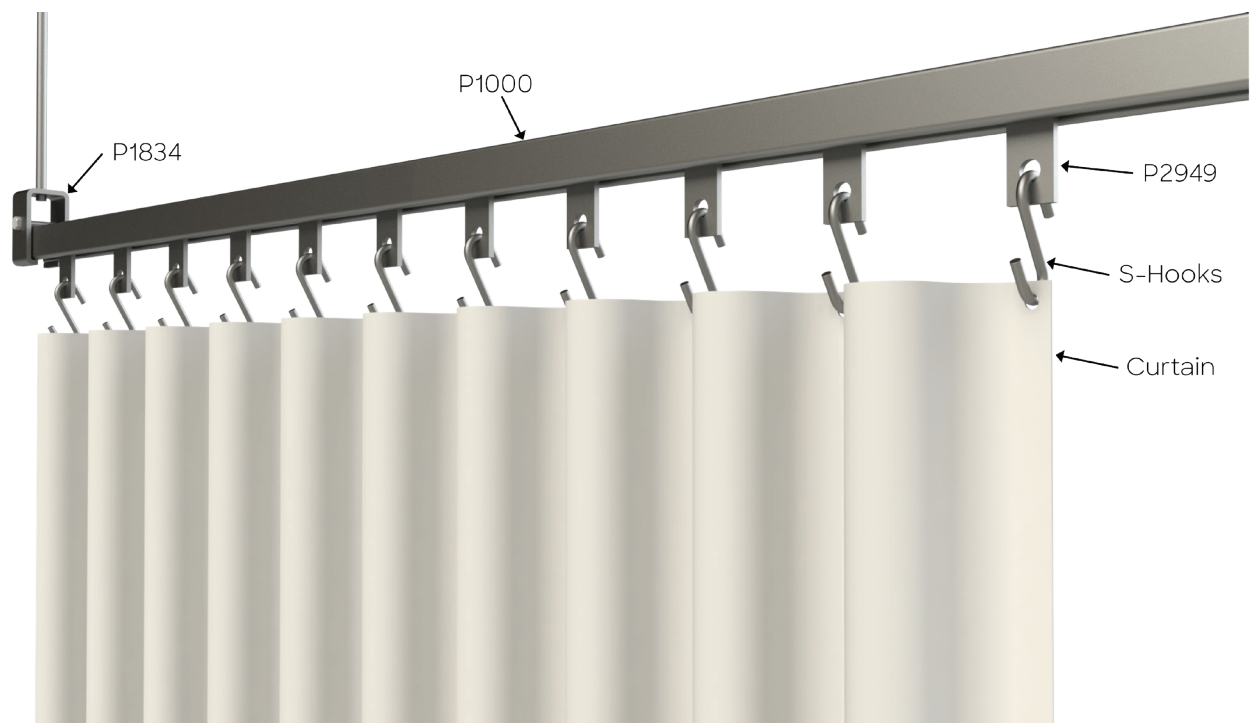
- Portable/moving walls (Pictured)
- Barn doors
- Sliding gates

Part Number	Description
P1000	1-5/8" x 1-5/8", 12 Gage Channel
P1834	Channel Trolley Support
P1835	3-Hole Clevis Fitting
P1840	Track Splice
P2949	2-Wheel Trolley

\* Based on allowable load for trolleys, actual allowable load may be determined by the allowable load of other strut/fittings.

## Curtains

Curtain systems are a popular use-case for Unistrut trolley systems. Simply use some two-wheeled trolleys like the P2949 with a wide range of off-the-shelf hooks to hang curtains. Our smooth rolling trolley wheels allow the curtain to be opened and closed with little resistance.



### Applications:

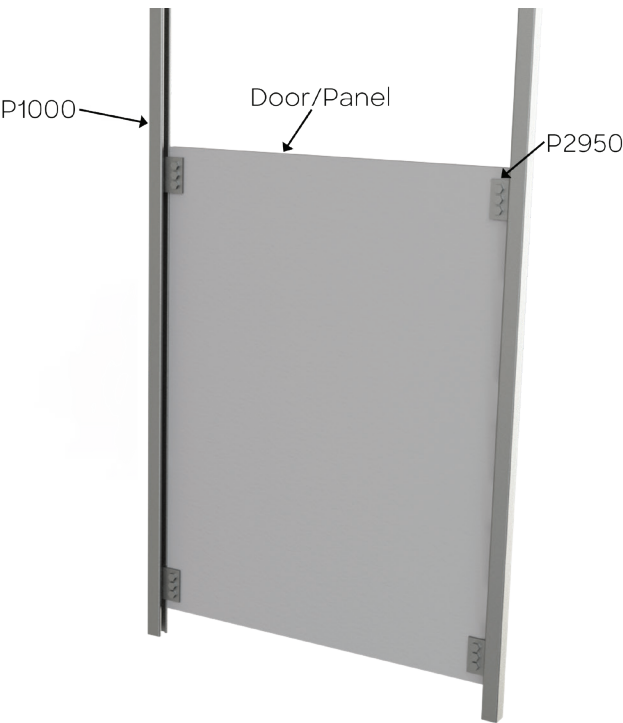
- Welding curtain
- Dividing curtain
- Hot/cool air containment

Part Number	Description
P1000	1-5/8" x 1-5/8", 12 Gage Channel
P1834	Channel Trolley Support
P2949	2-Wheel Trolley



## Sliding Gates

Sliding gates made from Unistrut are able to be used in vertical and horizontal orientations. They can be helpful for applications like animal cages, perimeter fences, and much more! Since the trolleys are traveling vertically along the track, the allowable loads listed for trolleys will not be a limiting factor in the overall allowable load of the system.



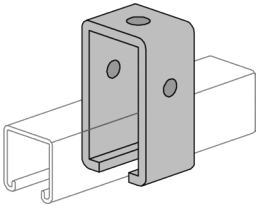
### Applications:

- Animal gates
- Perimeter fences
- Vertical lifts for animals/items

Part Number	Description
P1000	1-5/8" x 1-5/8", 12 Gage Channel
P2072A	Post Base
P2950	4-Wheel Trolley

**P1834**

Requires  $\frac{3}{8}$ " x  $2\frac{1}{2}$ " Bolt and  $\frac{3}{8}$ " Nut  
(not included)



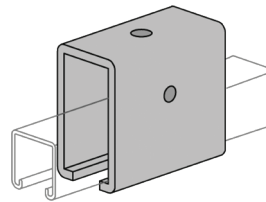
Design Load 1200lbs.  
(5.34 kN)

Wt/100 pcs: 102 Lbs (46.3 kg)

**P1834A**

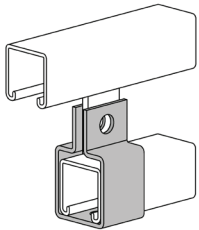
Requires  $\frac{3}{8}$ " x  $2\frac{1}{2}$ " Bolt and  $\frac{3}{8}$ " Nut  
(not included)

\*To be used at a track splice



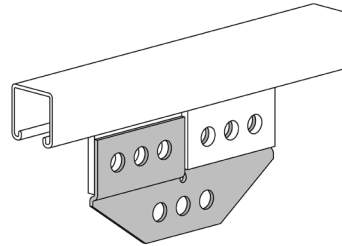
Design Load 2500lbs.  
(11.12 kN)

Wt/100 pcs: 220 Lbs (99.8 kg)

**P1835**

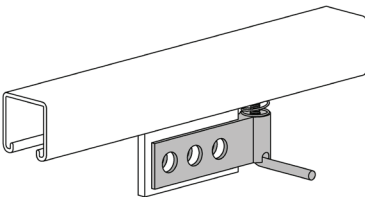
Design Load 500 Lbs  
(2.22 kN)

Wt/100 pcs: 51 Lbs (22.7 kg)

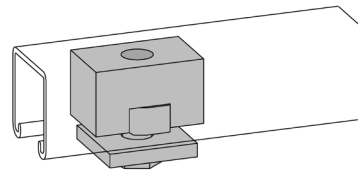
**P1836**

Design Load 1200 Lbs  
(2.22 kN)

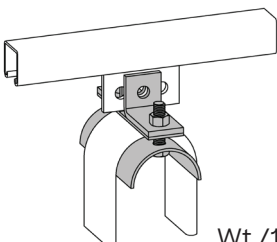
Wt/100 pcs: 175 Lbs (79.4 kg)

**P1837**

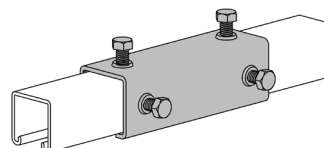
Wt/100 pcs: 60 Lbs (27.2 kg)

**P1838**

Wt/100 pcs: 122 Lbs (55.3 kg)

**P1839**

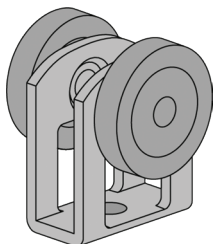
Wt./100 pcs: 244 Lbs (110.7 kg)

**P1840**

Design Load 500 Lbs  
(5.34 kN)

Wt./ 100 pcs: 142 lbs (55.3 kg)

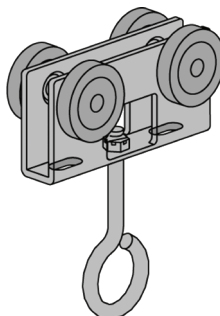
## P2749, P2749N†



Part Number	Design Load lbs (kN)	Wt/100 pcs Lbs (kg)
P2749	50	21
	.22	9.5
P2749N	10	13
	.04	5.9

Clevis Material: 12 gauge. †  
"N" indicates acetal wheels.

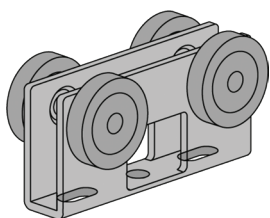
## P2751, P2751†



Part Number	Design Load lbs (kN)	Wt/100 pcs Lbs (kg)
P2751	100	63
	.44	28.6
P2751N	20	40
	.09	18.1

Clevis Material: 12 gauge. †  
"N" indicates acetal wheels.

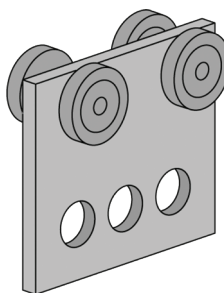
## P2750, P2750N†



Part Number	Design Load lbs (kN)	Wt/100 pcs Lbs (kg)
P2750	100	55
	.44	24.9
P2750N	20	32
	.09	14.5

Clevis Material: 12 gauge. †  
"N" indicates acetal wheels.

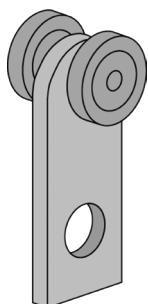
## P2950



FPM	RPM	Design Load In P1000 lbs (kN)
180	600	300
		1.33
90	300	450
		2.0
30	100	600
		2.67

Wt/100 pcs: 110 lbs (49.9 kg)

## P2949



FPM	RPM	Design Load In P1000 lbs (kN)
180	600	150
		.67
90	300	225
		1.0
30	100	437
		1.94

Wt/100 pcs: 46 lbs (20.9 kg)



Allied Tube & Conduit ▴ AFC Cable Systems ▴ Heritage Plastics ▴ Unistrut  
Unistrut Construction ▴ Cope ▴ US Tray ▴ Calbrite ▴ Calbond ▴ Kaf-Tech  
Power-Strut ▴ Calconduit ▴ Razor Ribbon ▴ Calpipe Security ▴ Vergokan ▴ Cii  
Columbia-MBF ▴ Eastern Wire + Conduit ▴ ACS/Uni-Fab ▴ Sasco Strut ▴ Marco  
FRE Composites ▴ Queen City Plastics ▴ Four Star Industries ▴ Flexicon

## **Atkore**

16100 South Lathrop Avenue  
Harvey, IL 60426

**PHONE** / 740-928-1019  
**TOLL FREE** / 877-285-4066

[atkore.com/razorribbon](https://atkore.com/razorribbon)

Want to join a company that helps you build  
the mindset, skill set and tool set for success?  
Visit us at [atkore.com/careers](https://atkore.com/careers)